

LUXURY RETURN AIR GRILLES



IN-STOCK & SPECIAL ORDER

**Easy replacement up-grade
for metal grilles**

WORTH
HOME PRODUCTS
Elegant • Innovative • Affordable

Product Overview

These luxury A/C return air grilles replace ordinary metal grilles. They paint beautifully to match any décor.

Why replace a metal return air grille with our luxury AC grille?



Looks better * Runs quieter * Easier to clean

The picture on the left shows a stamped metal return air grille. The picture on the right shows the Luxury Return Air Grille replacement.

- **Paint to match your trim or wall color**
- **Fits most standard return air openings**
- **Holds a standard 1" filter**
- **Simple to install**

Product Features

2-coats oil base primer – uses either oil base or latex based paint; 2 coats recommended

New Zealand Pine – quality wood material for the exterior frame and louvers, which provide some flexibility if bumped

9-ply Baltic Birch – wood material used for the louver frame; very strong; will not warp

26 gauge metal filter frame – sturdy frame with some flexibility for out-of-square opening; holds a standard 1” filter along with the wooden grille; side flanges ensure a flush installation without tools

Easy to install – fits most standard openings with little to no wall modifications

Patented locking system – innovative, patent-pending design uses no visible screws or latches to hold the grille securely in the wall or ceiling

Easy to clean – louver spacing allows room for easy dusting or damp cloth cleaning

Superior air flow – designed for optimum space between the louvers for quiet, maximum air flow

Comparison to Metal Grilles

Besides being difficult to paint or clean, stamped metal grilles frequently bend or bow in addition to having unsightly or cumbersome screws or latches. In comparison, the Luxury AC grilles have none of these challenges and will maintain their finish like other trim material.

More on Return Air Grilles

Standard HVAC systems use air-purifying filters located behind return air grilles, which should be located in unobstructed, often highly visible areas for maximum air flow and easy access to replace filters.

Other HVAC systems use central filters located at the unit but also fixed return air grilles in unobstructed, highly visible areas as well. The ducts behind these grilles require access for cleaning, inspection or repair.

How-To

2 parts included:

Wood grille made from New Zealand Pine with a Baltic Birch Frame, all primed and ready to paint the color of your wall or trim:

26 gauge metal frame – fits most return air openings and holds a standard 1" filter:



To separate the grille from the metal frame in preparation for installation, follow the 3 steps below. To attach the grille to the metal frame, reverse the 3 steps below:

Step 1 – Squeeze up

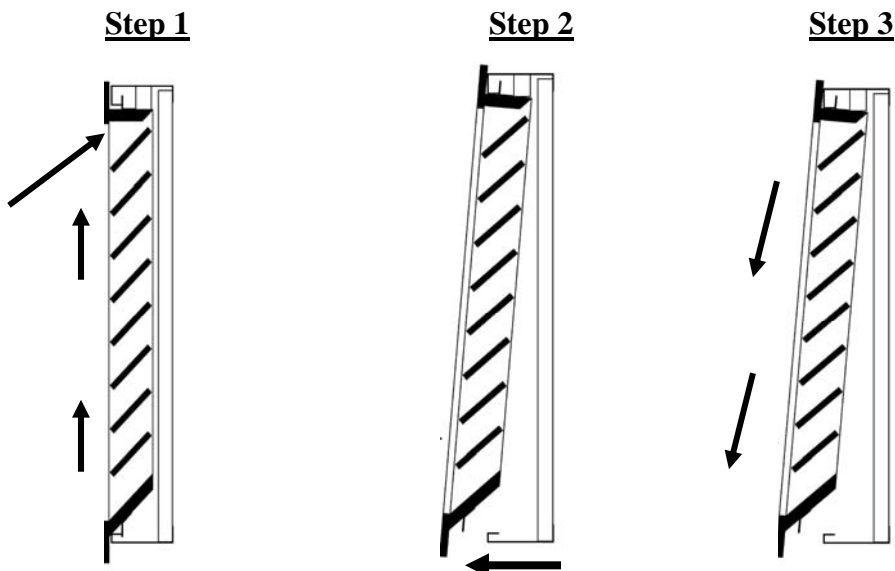
Place your fingers in the center of the grille frame as indicated by the arrow
Squeeze grille against top of metal frame

Step 2 – Swing out

Allow the lower tabs to clear bottom edge of the metal frame
Pull out the bottom of the grille slightly

Step 3 – Slide down

Slide out the grille at a very slight angle



Standard Sizes

Our standard grilles are available in the 16 most popular filter sizes. With 2 coats of oil-base primer, these grilles are ready to paint to match your wall or trim.

These grilles utilize our patent-pending locking system that secures the grille in your wall or ceiling without visible latches or screws. This new green building product is friendly to the environment.



- New Zealand Pine & Baltic Birch grille
- 26 gauge metal wall/ceiling frame
- Holds standard 1" filter
- Easy to clean

Special Order Sizes

Our Special Order grilles offer flexibility for your unique requirements. Available in unique sizes and stain-grade wood species, these grilles utilize the same patent-pending locking system that secures the grille in your wall or ceiling without visible latches or screws.



- Unprimed, paint-grade Poplar* & Baltic Birch grille
 - 26 gauge metal wall/ceiling frame
 - Holds standard 1" filter
- * contact us for pricing on stain-grade wood*

Allow 3-4 weeks for all Special Order Sizes to ship.

Call toll free 1-866-384-9400 or [e-mail us](mailto:info@worthhomeproducts.com) for Expedited Service pricing and details.

Custom Sizes or Wood Species

Call 1-713-660-0025 for details.

Questions or Need to Order?

If you are have questions or wish to place an order, call our Customer Care Center at the number below.

Questions: 1-713-660-0025

Fax Orders: 1-832-202-2522

WORTH

HOME PRODUCTS
Elegant • Innovative • Affordable